

050930

RECEIVED  
LARAMIE COUNTY  
CHEYENNE, WY.

CERTIFIED LAND CORNER RECORDATION

DESCRIPTION OF CORNER EVIDENCE FOUND, AND ORIGINAL RECORD (if known) **RECORDED 9 AM 9 09**  
Found no evidence of previous monumentation.

1/4  
S.24 S.19  
T.16N  
R.67W., R.66W.  
6rh P.M.

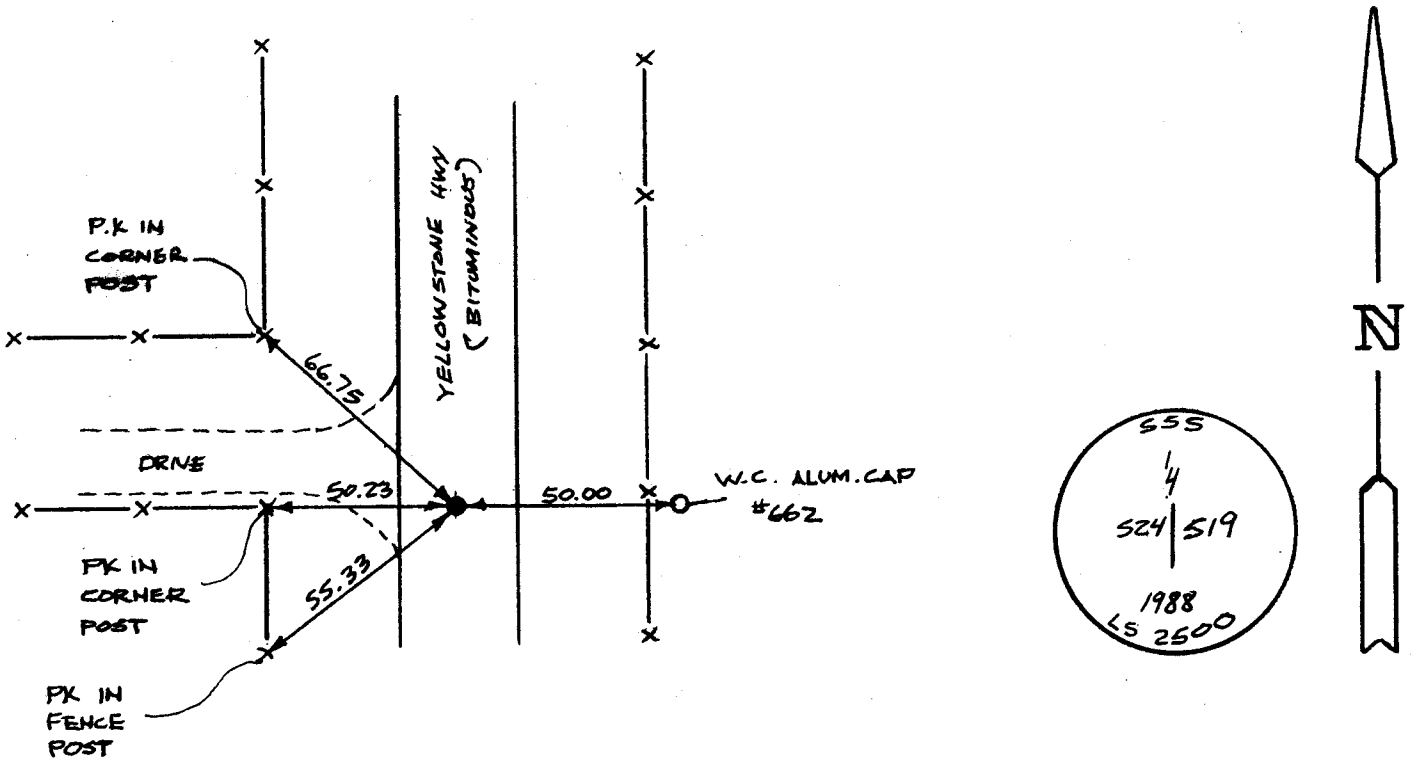
G.L.O. Record: Unknown

DESCRIPTION OF MONUMENT AND ACCESSORIES ESTABLISHED  
TO PERPETUATE THE ORIGINAL LOCATION OF THIS CORNER:

At the corner: Set 5/8" x 18" rebar with 2" Aluminum Cap 0.03' below road surface and stamped as shown below 50' West of W.C. set by L.S. #662.

Accessories : See ties below.

SKETCH, WITH COURSE AND DISTANCE TO ADJACENT CORNER IF DETERMINED IN THIS SURVEY.  
(May Sketch or Paste Reproduction on Reverse Side.)



I, John A. Steil certify that I have carefully performed or reviewed the work done on the diagrammed corner as reported on this recordation form and approve the same.

John A. Steil L.S. 2500  
Signature of Surveyor Registration No.

STATE OF WYOMING,  
Office of Clerk and Recorder,  
County of \_\_\_\_\_

This "corner record" was filed for record on the \_\_\_\_\_ day of \_\_\_\_\_, 19\_\_\_\_, was noted on the cross-index plat and is assigned page No. \_\_\_\_\_, in book No. \_\_\_\_\_.

County Official			
Cross Index No.	P-1	T. 16N	R. 66W Mer. 6th
	P-25	T. 16N	R. 67W Mer. 6th
		T. _____	R. _____ Mer.
		T. _____	R. _____ Mer.
		T. _____	R. _____ Mer.
		T. _____	R. _____ Mer.
		T. _____	R. _____ Mer.